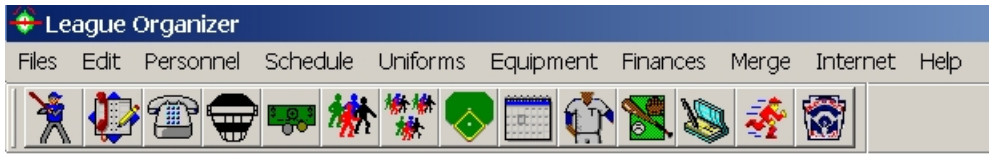
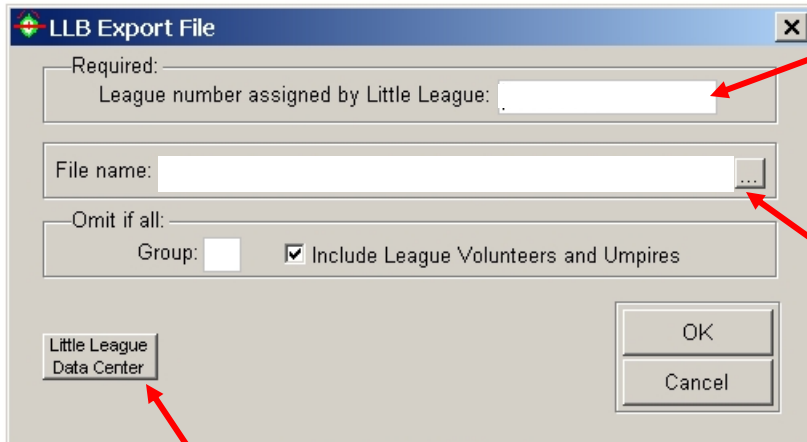


# League Organizer Little League Data Center Tutorial





Select icon on the toolbar  
Create Little League Registration File



Enter Your League  
Number

Location of Saved  
Little League Registration File  
Default:  
My Documents\League Organizer Docs  
Saved File name:  
**LLExport.txt**

Link to Little League Data Center

## LITTLE LEAGUE® DATA CENTER

**PLEASE LOGIN**

League/District ID:

Access Code:

Your Name:

Your Email Address:

Your Role:

Enter All information.  
League/District ID and Access Code  
provided by Little League

## LITTLE LEAGUE® DATA CENTER

**MAIN MENU**

- [Upload Player Rosters](#)
- [Update Officers](#)
- [2006 Charter Information](#)
- [2007 Charter Information](#)
- [2006 Tournament Information](#)
- [2007 Tournament Information](#)
- [Charter Committee Waivers](#)
- [Change Access Code](#)
- [Logout](#)

Select Upload Player Rosters

**OTHER LITTLE LEAGUE NETWORK ITEMS**

- [Facilities Survey](#)
- [Get your official Little League web site](#)
- [Set up Online Registration for your league](#)
- [ASAP Plan Status](#)
- [Order Pins, Patches and Publications](#)

© 2006 THE ACTIVE NETWORK

# LITTLE LEAGUE® DATA CENTER

## IMPORTANT INFORMATION

This area is to be used for the upload of your final **2007** League roster file. League rosters are no longer to be viewed and managed online, but rather submitted to Little League via a simple file upload process.

**BEFORE UPLOADING BE SURE THAT YOUR ROSTER FILE HAS BEEN PREPARED IN ONE OF THE PROPER FORMATS DESCRIBED ON THE [UPLOAD LEAGUE ROSTERS PAGE!](#)**

### Downloads and Links:

- [LLB Roster Submit FAQ's](#)
- [Download the LLB Roster Spreadsheet](#)  
(Spreadsheet is for leagues that do not use an approved LLB software program)

**Uploading your rosters will completely overwrite your previously uploaded file.**

*Please ensure that you upload your COMPLETE roster file and not just your recent edits!*

Upload League Rosters

Back to Main Menu

## 2007 ROSTER UPLOAD HISTORY

1) **CURRENT:** May 31 2007 4:44PM by George Krezmer - League Player Agent (gkrezmer@c-sgroup.com)  
Job completed (538 records processed.) Coachs - 67 records. Managers - 39 records. Players - 432 records. [VIEW UPLOAD DETAILS](#)

Select Upload League Rosters

Approved file formats for rosters include:

Active Roster Management Software	AFTF download file
Active Online Registration	AFTF download file
LeagueOne	AFTF download file
LeagueWorks	AFTF download file
The Little League roster spreadsheet	<a href="#">download here</a>
Logical Solutions (League Organizer)	LLB export file
All American Sportsware (LAS)	LLB export file

# LITTLE LEAGUE® DATA CENTER

Active and Little League have agreed to utilize the new Active File Transfer Format (AFTF) as well as the current LLB export file format for roster uploads via the Little League Data Center.

Approved file formats for rosters include:	
Active Roster Management Software	AFTF download file
Active Online Registration	AFTF download file
LeagueOne	AFTF download file
LeagueWorks	AFTF download file
The Little League roster spreadsheet	<a href="#">download here</a>
Logical Solutions (League Organizer) LLB export file	
All American Sportsware (LAS)	LLB export file

Approved Format

Once you have prepared your league/team rosters and saved it on your PC in one of these file formats, simply browse for the file below, and submit it to Little League.

For multi-manged leagues please upload a separate file for each league, logging in separately with each League-ID and Access Code.

IMPORTANT: for leagues using the LLB export file from LAS or League Organizer - the league ID in the file must match the league ID that you used to login to the Data Center, or else your file will be rejected.

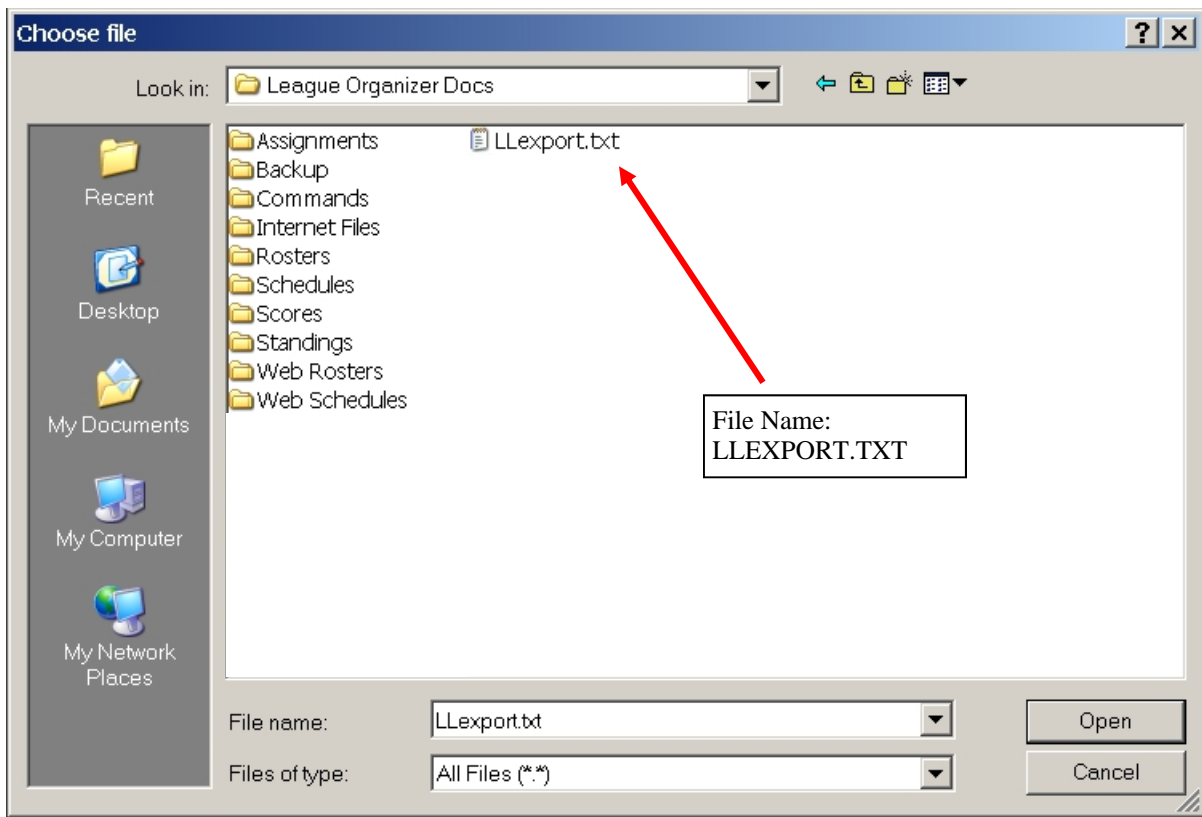
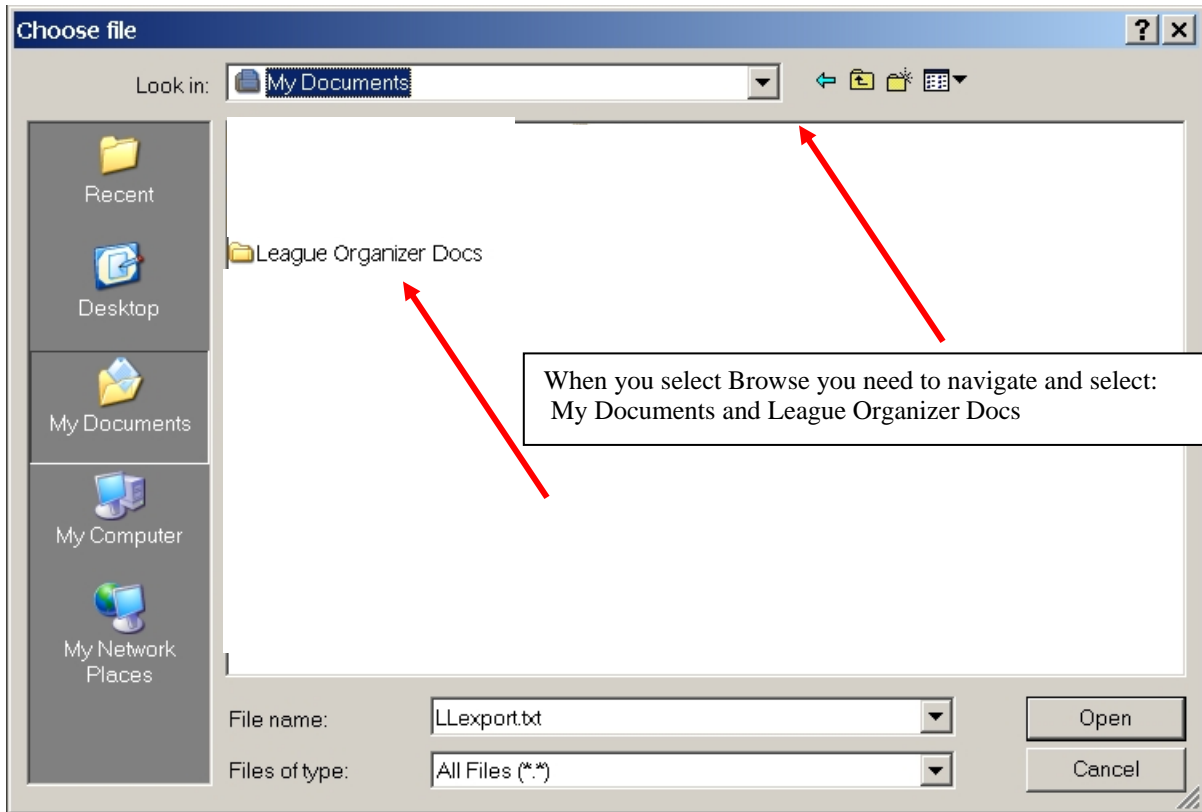
Your entire roster file will be rejected if any Little League required information is not included in any record! An error log will be available for download.

**UPLOAD ROSTER FILE**

Roster File:

© 2006 THE ACTIVE NETWORK

You need to select Browse to locate the Little League Registration File.  
File can be found in: MY DOCUMENTS \ LEAGUE ORGANIZER DOCS  
File Name: LLEXPORT.TXT



# LITTLE LEAGUE® DATA CENTER

Active and Little League have agreed to utilize the new Active File Transfer Format (AFTF) as well as the current LLB export file format for roster uploads via the Little League Data Center.

Approved file formats for rosters include:	
Active Roster Management Software	AFTF download file
Active Online Registration	AFTF download file
LeagueOne	AFTF download file
LeagueWorks	AFTF download file
The Little League roster spreadsheet	<a href="#">download here</a>
Logical Solutions (League Organizer)	LLB export file
All American Sportsware (LAS)	LLB export file

Once you have prepared your league/team rosters and saved it on your PC in one of these file formats, simply browse for the file below, and submit it to Little League.

For multi-manged leagues please upload a separate file for each league, logging in separately with each League-ID and Access Code.

IMPORTANT: for leagues using the LLB export file from LAS or League Organizer - the league ID in the file must match the league ID that you used to login to the Data Center, or else your file will be rejected.

Your entire roster file will be rejected if any Little League required information is not included in any record! An error log will be available for download.

**UPLOAD ROSTER FILE**

Roster File:

© 2006 THE ACTIVE NETWORK

Click Submit Rosters